

Applications, Tools and Perspectives of AI in Education for Secondary School Teachers



HELLENIC MINISTRY OF
Education, Religious Affairs and Sports



Unleashing Creativity: Generative AI Tools in eTwinning Projects

Adil Tugyan
eTwinning Ambassador
eTwinning LE Expert

Ertan Kocabaş
eTwinning NSO
Türkiye

Contact Seminar

Applications, Tools and Perspectives of AI in Education for Secondary School Teachers

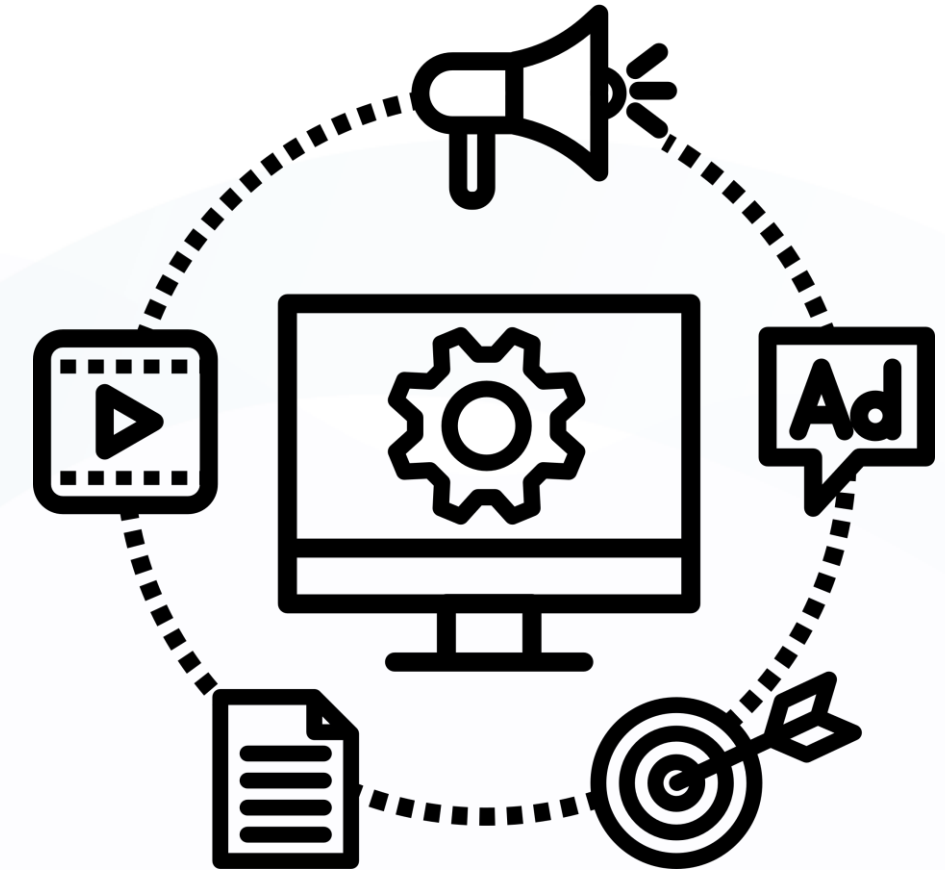


HELLENIC MINISTRY OF
Education, Religious Affairs and Sports



What are we going to learn?

- Introduction
- What is intelligence?
- What is AI?
- Machine Learning (Supervised -Unsupervised)
- Deep Learning (Discriminative - Generative)
- Genarative AI?
- How GenAI work ?
- GenAI in eTwinning Project planing process (E2E hands On)
- Q&A



Applications, Tools and Perspectives of AI in Education for Secondary School Teachers



HELLENIC MINISTRY OF
Education, Religious Affairs and Sports



Co-funded by the
Erasmus+ Programme
of the European Union

We are who we are ...



Adil Tugyan

Teacher of English as a Second Language (TESOL TEFL TYL)

IT Coordinator

eTwinning Ambassador

ESEP eTwinning LE Expert

Artificial Intelligence (AI) Education for Teachers

by Macquarie University & IBM

EU Academy Course Designer and Moderator

eTwinning Content Creation Trainer MONE TR

EU Codewek Ambassador for Turkiye



Ertan Kocabaş

eTwinning NSO Turkiye

Computer and Instructural Technology Expert

Contact Seminar



1

Go to wooclap.com

2

Enter the event code in the top banner

Event code
SSIEBR

<https://bit.ly/PatrasGreeceML>



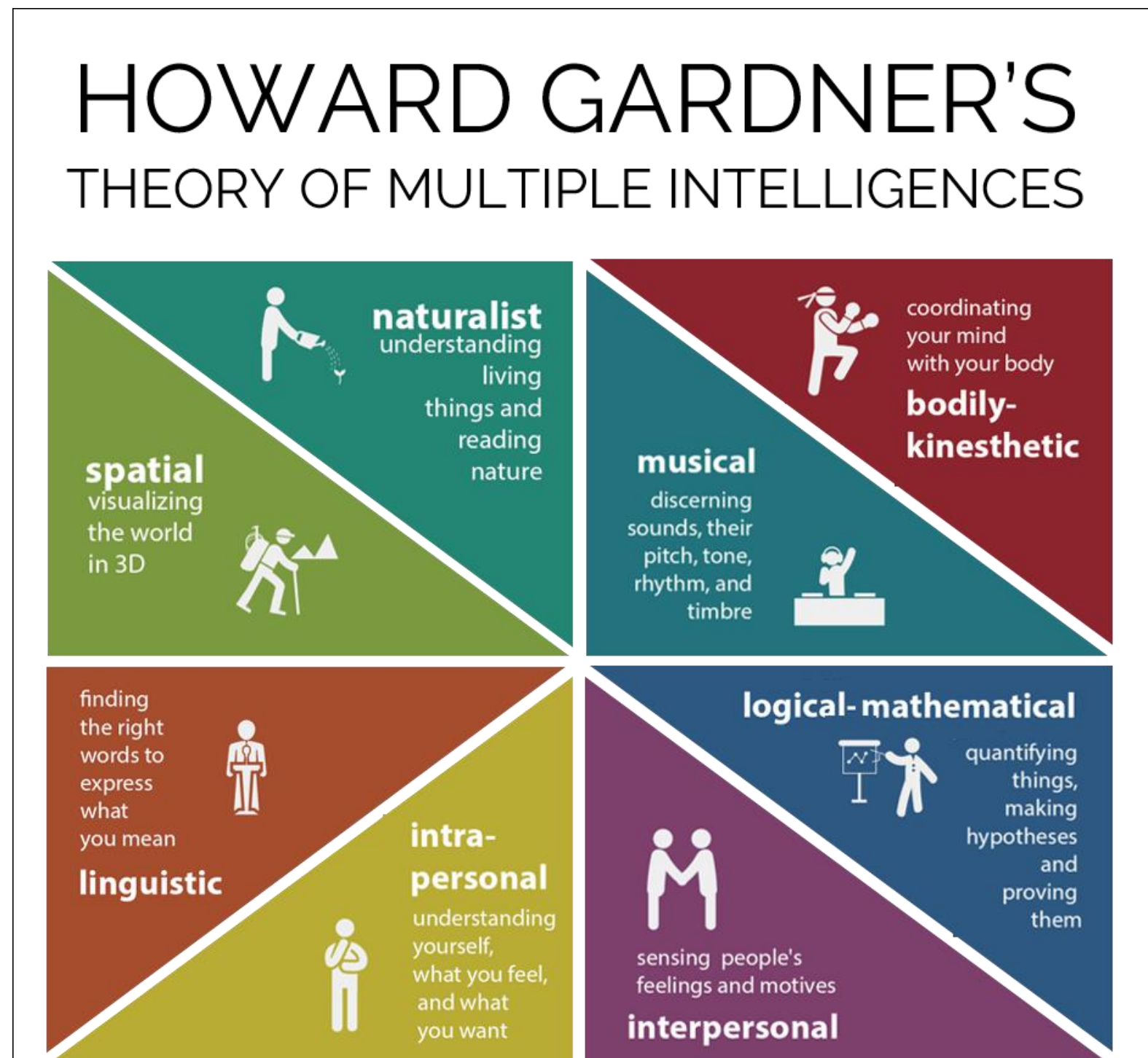
**I know that I am intelligent,
because I know that I know nothing.**

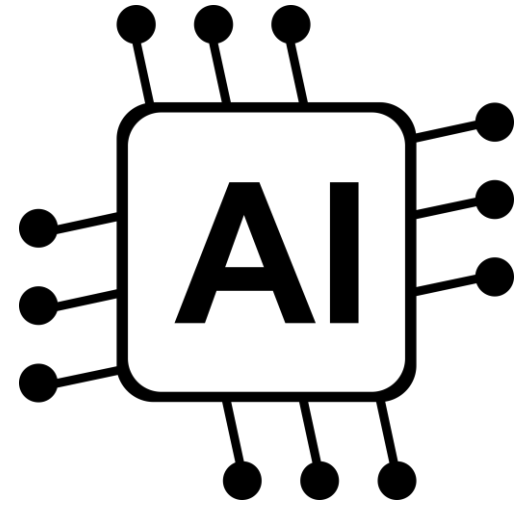
Socrates

What is intelligence?

Intelligence, in general terms, refers to the ability to acquire and apply knowledge and skills.

‘Comprehend their environment and make decisions based on the information available to them.’





In terms of artificial intelligence , intelligence refers to the capacity of a machine or software to perform tasks that would typically require human cognitive abilities.

For example, a self-driving car demonstrates AI intelligence





What is AI ?

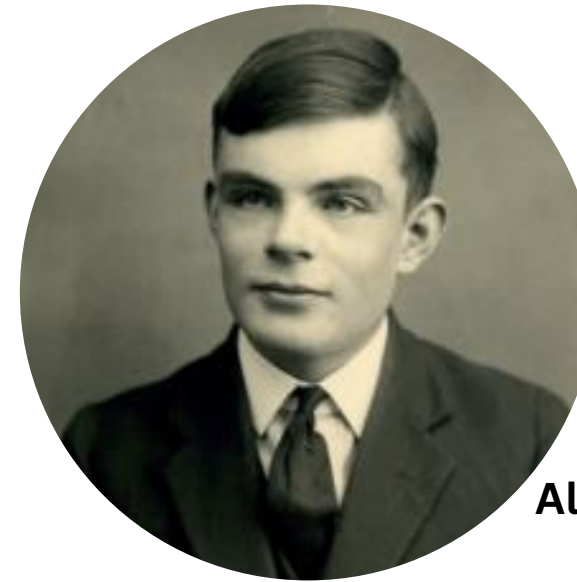
AI is a branch of computer science that deals with the creation of intelligent agents, and are systems that can reason, learn, and act autonomously. It requires human intelligence.



The Timeline Of AI



The Brothers Grimm 1812
Tale 53



Alan Turing

Since Alan Turing proposed the "imitation game" as a test of AI, there have been some important milestones in its achievements, as shown in the table below

Year Historic event

1950 - Alan Turing writes about the "imitation game", now known as the Turing Test

1956 - The term "artificial intelligence" is first used at Dartmouth University

1956 - ELIZA, the first chatbot, began conversing like a psychotherapist

1980 - Self-driving vehicles travel at speed around the University of Munich

1997 - IBM's "Deep Blue" AI beats chess champion, Kasparov

2011 - People can talk to "Siri", Apple's voice-recognition program

2012 - Google's "neural network" learns to recognise common objects

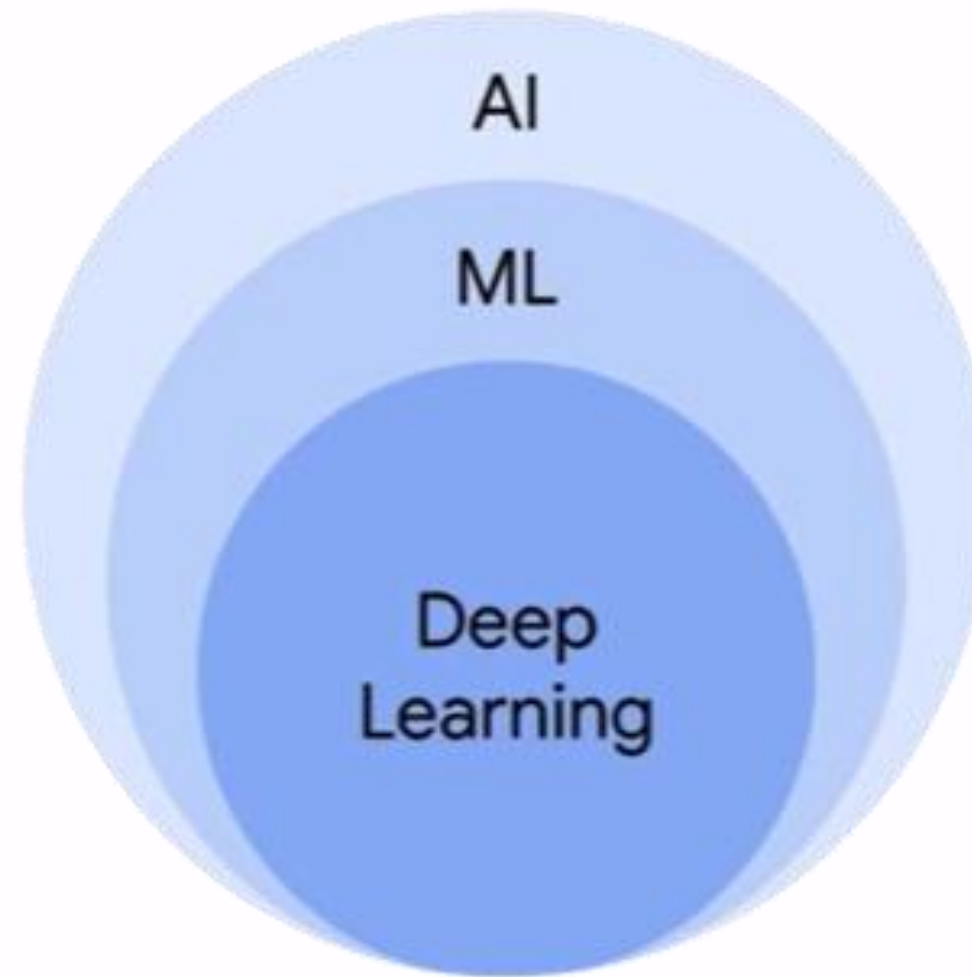


Amelia - 1st AI Worker



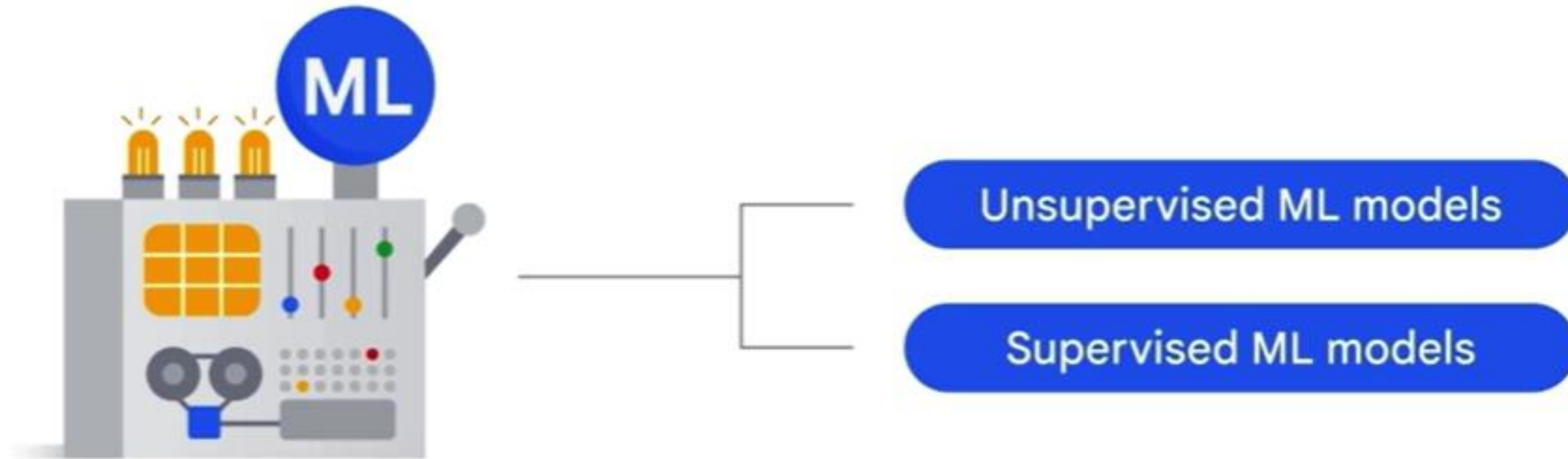
Artificial Intelligence

is a discipline



Machine Learning

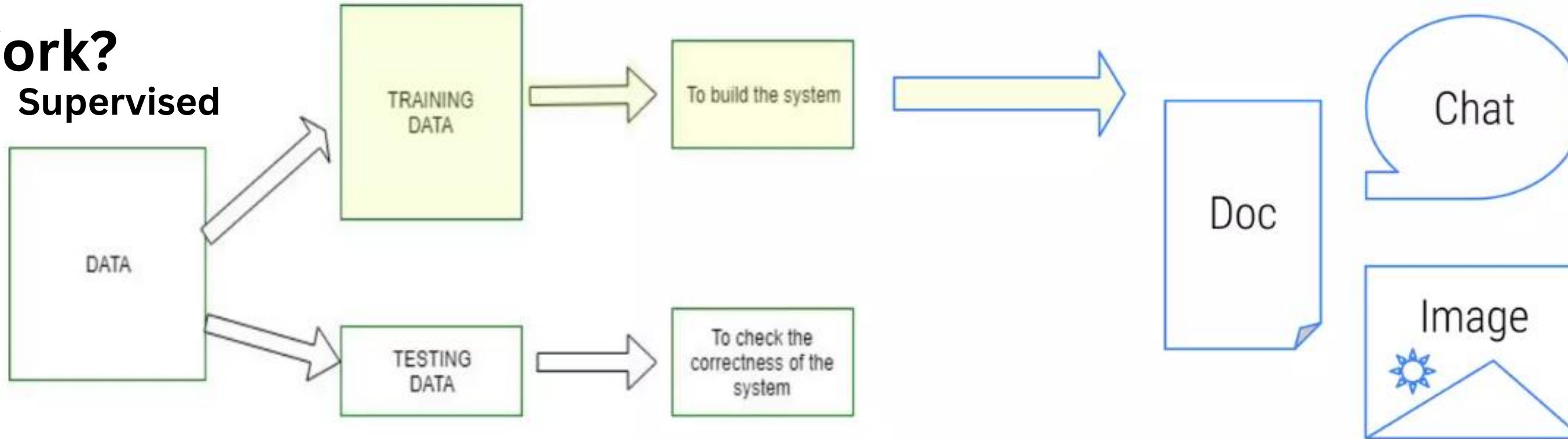
is a subfield



How does AI

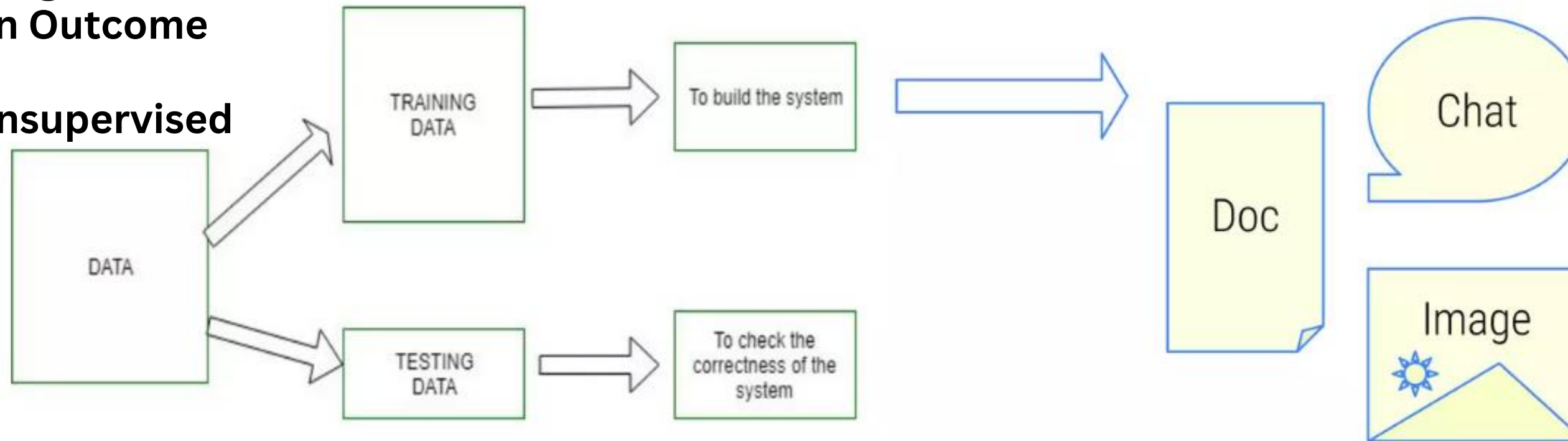
Work?

Supervised

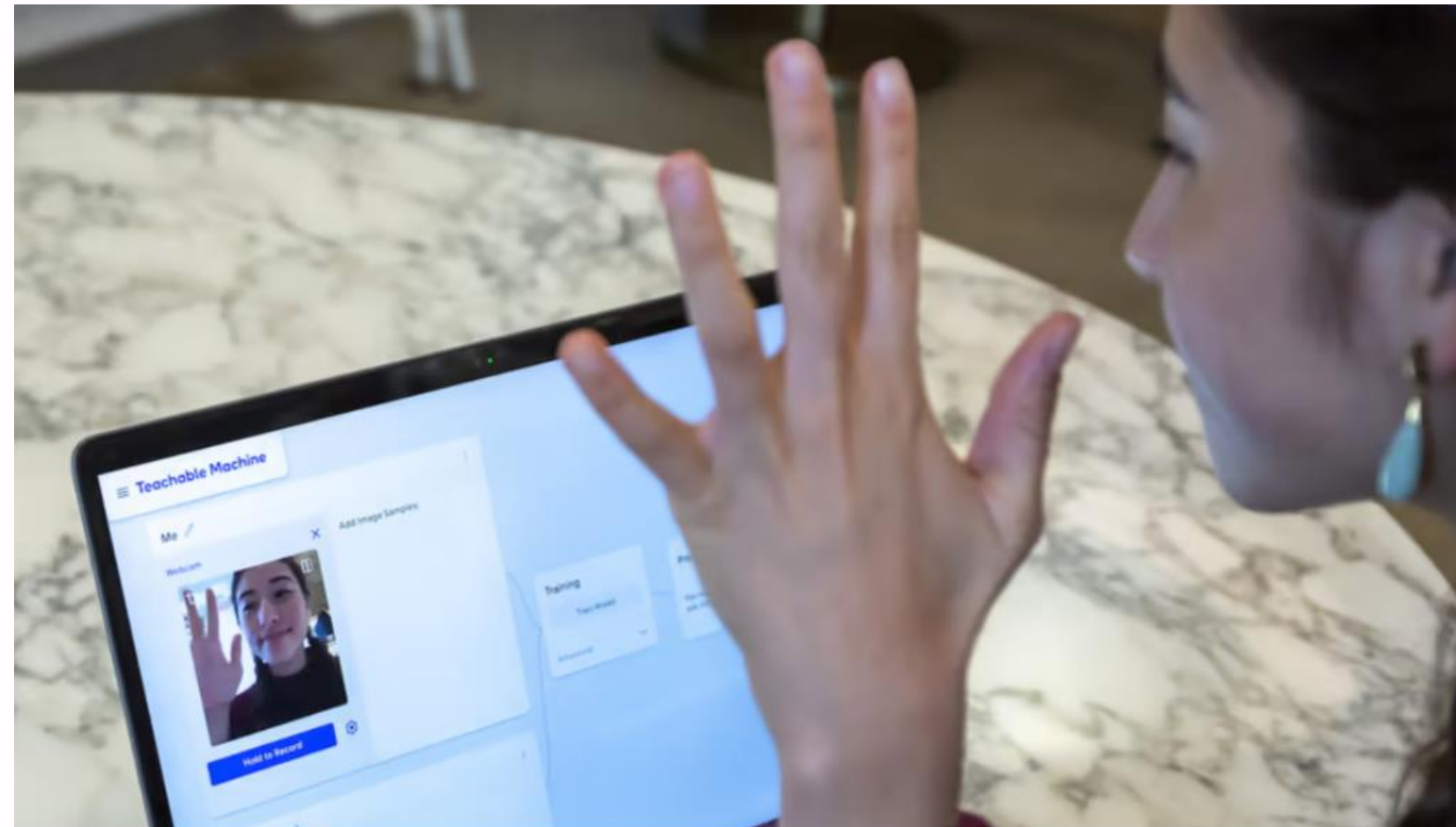


**No Training data
Unknown Outcome**

Unsupervised



Teachable Machine

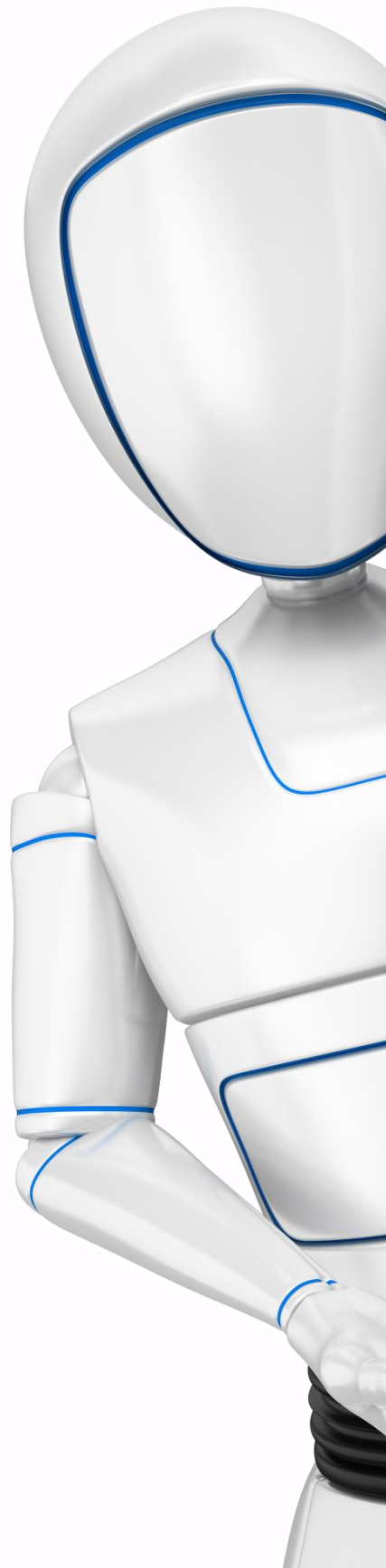


Teachable Machine

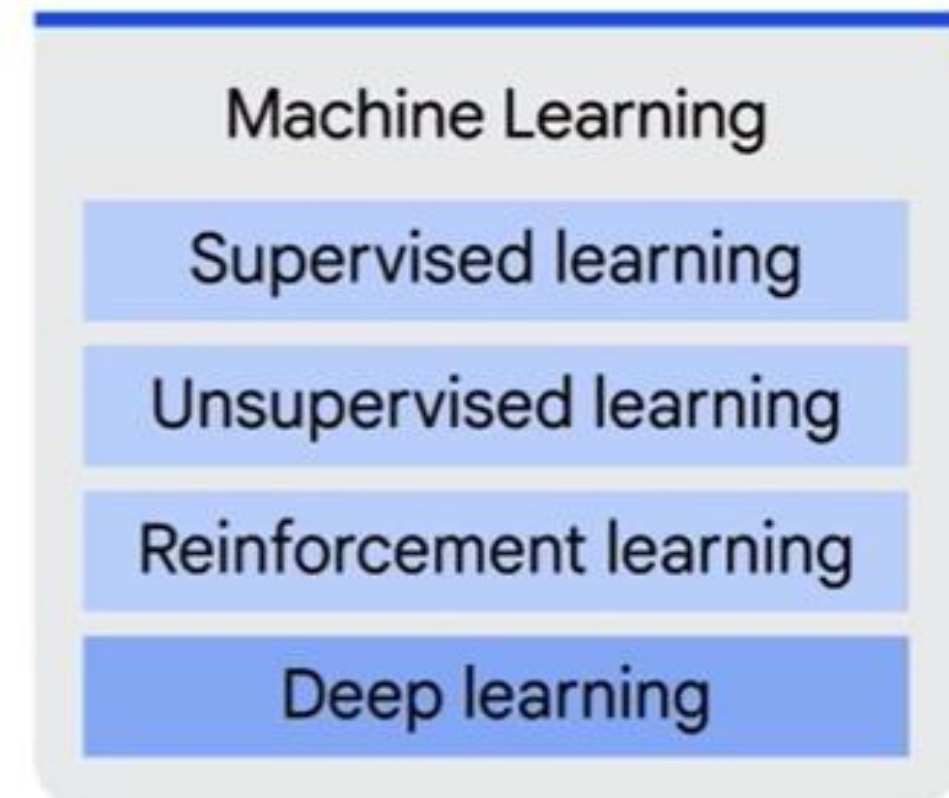
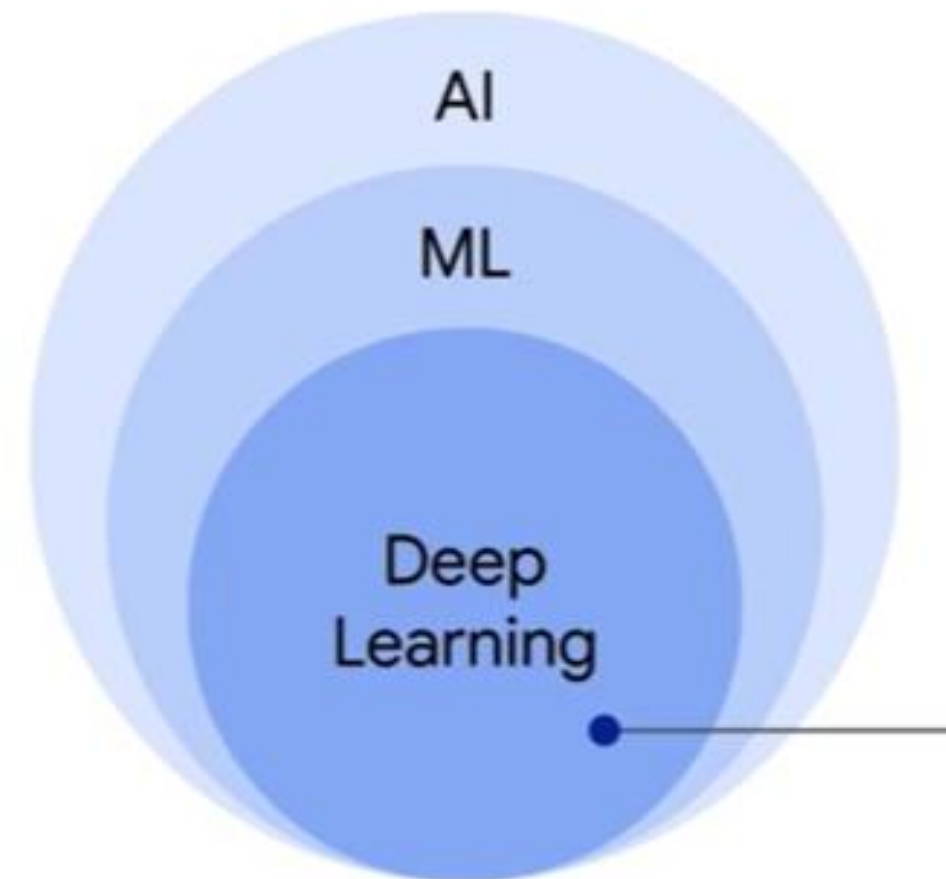
Train a computer to recognize your own images, sounds, & poses. A fast, easy way to create machine learning models for your sites, apps, and more – no expertise or coding required.

 withgoogle.com

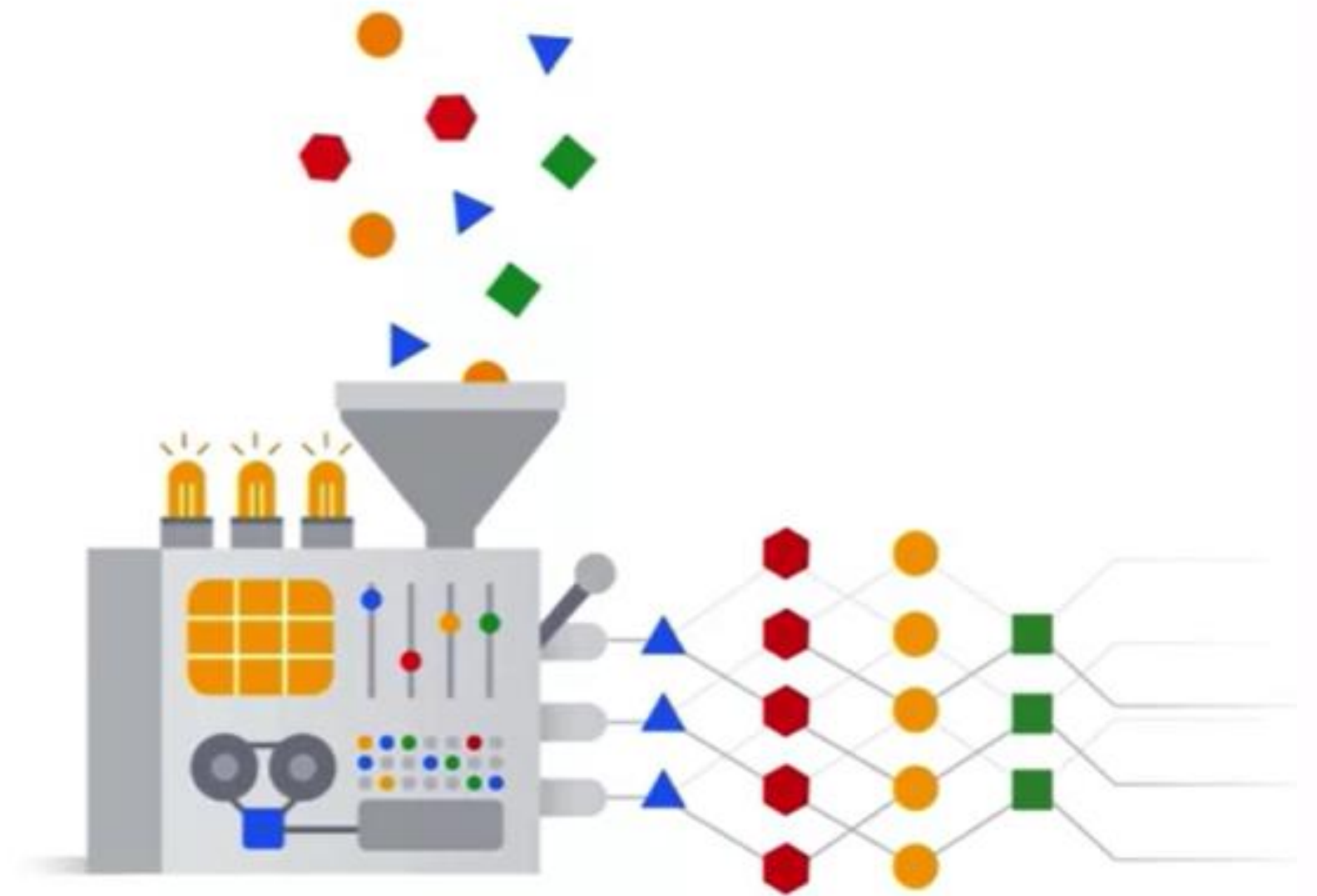
<https://t.ly/ZtwpS>



Deep learning is
a **subset of ML**



Deep learning uses Artificial Neural Networks - allowing them to **process more complex patterns** than traditional machine learning.



Applications, Tools and Perspectives of AI in Education for Secondary School Teachers

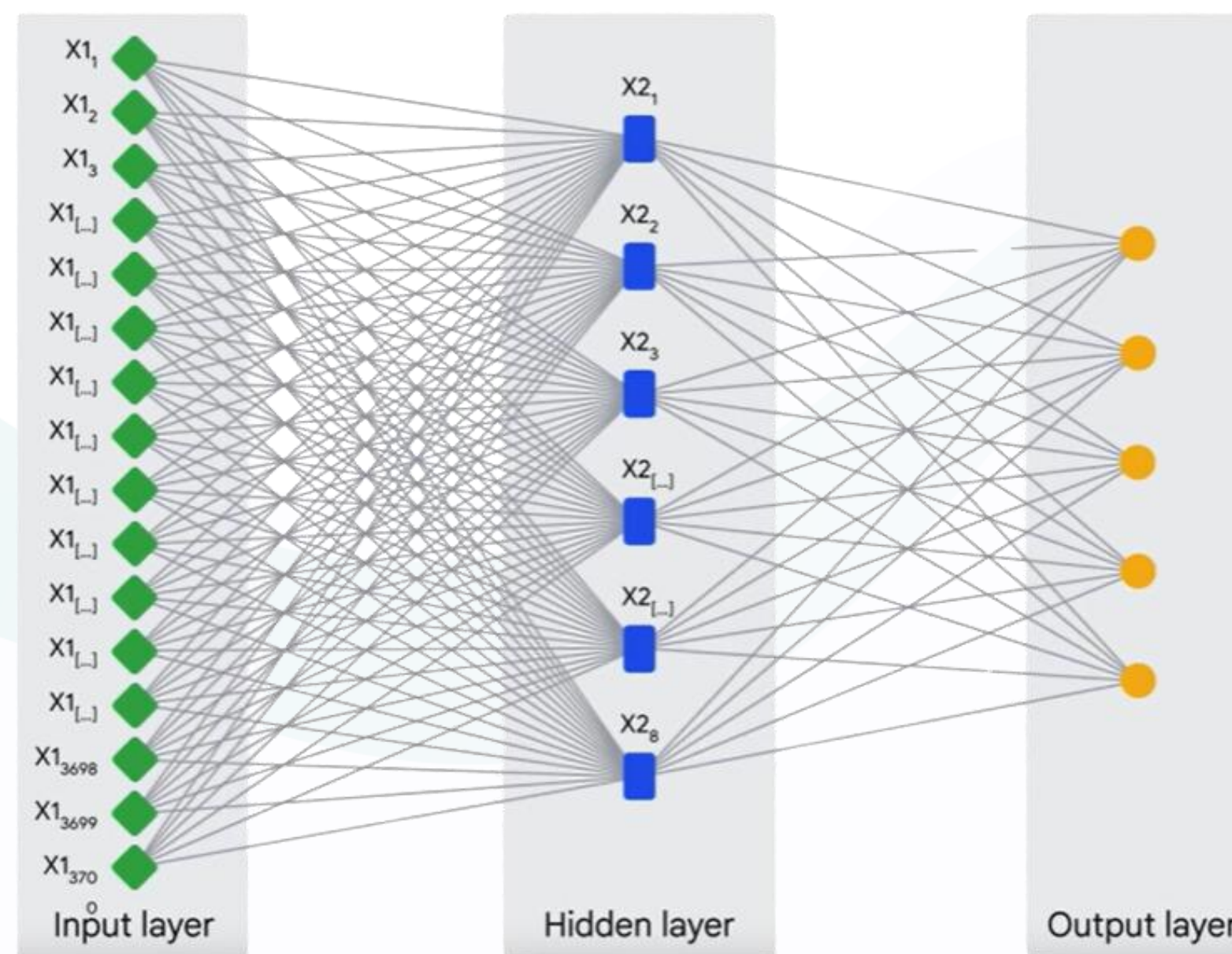


HELLENIC MINISTRY OF
Education, Religious Affairs and Sports



Co-funded by the
Erasmus+ Programme
of the European Union

Artificial neural networks are inspired by the human brain.



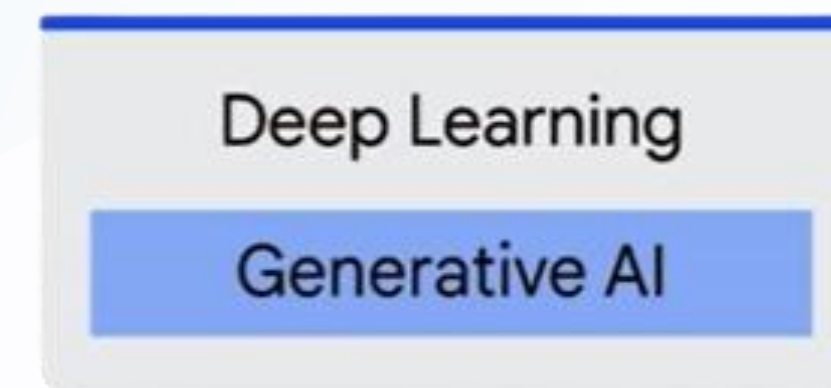
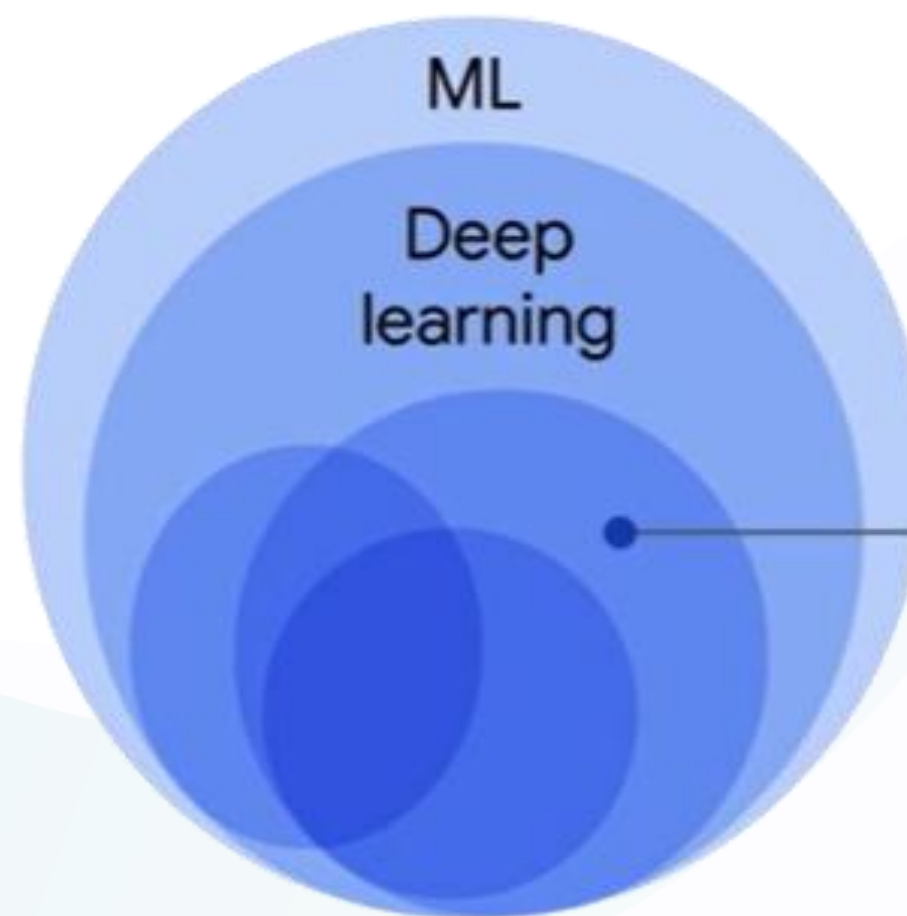
Applications, Tools and Perspectives of AI in Education for Secondary School Teachers



HELLENIC MINISTRY OF
Education, Religious Affairs and Sports



Generative AI
is a subset of
Deep Learning



Applications, Tools and Perspectives of AI in Education for Secondary School Teachers

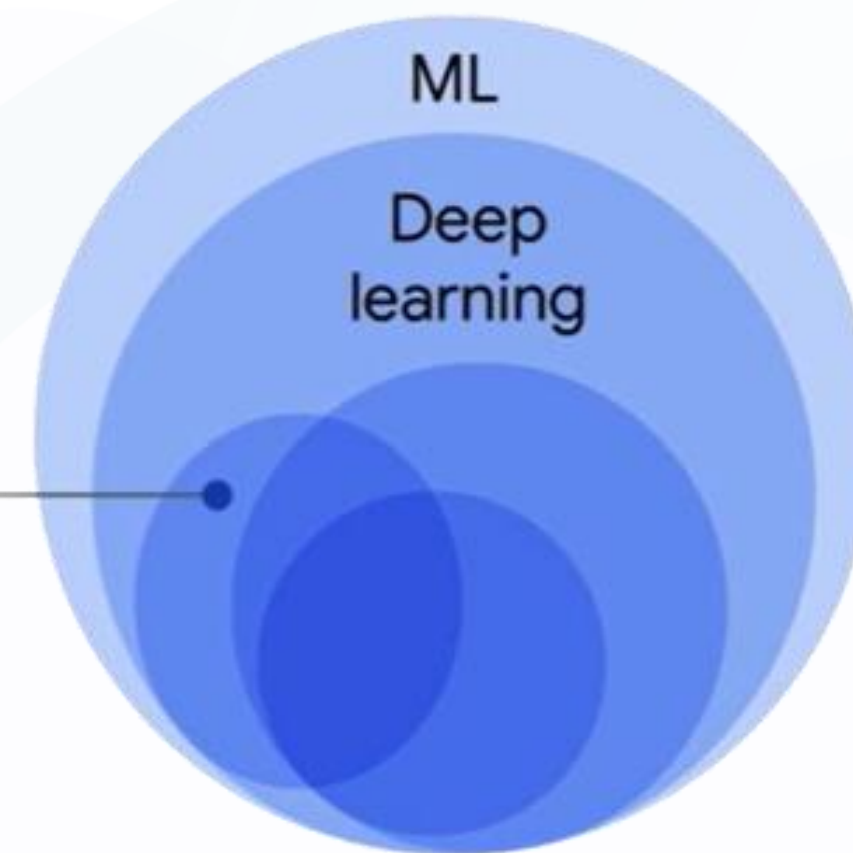
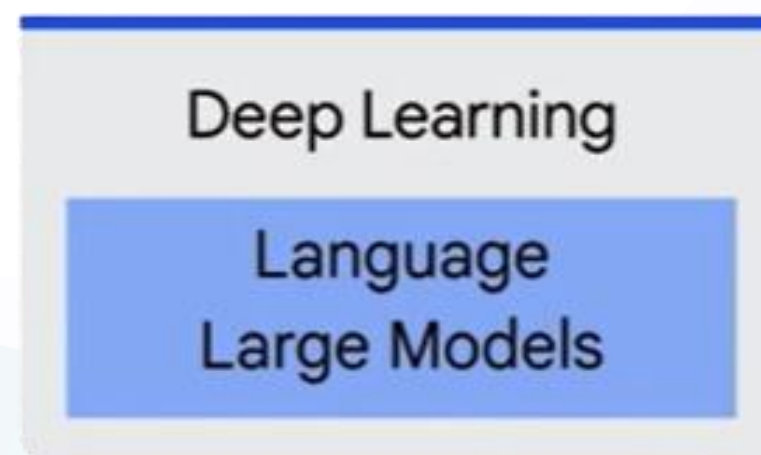


HELLENIC MINISTRY OF
Education, Religious Affairs and Sports

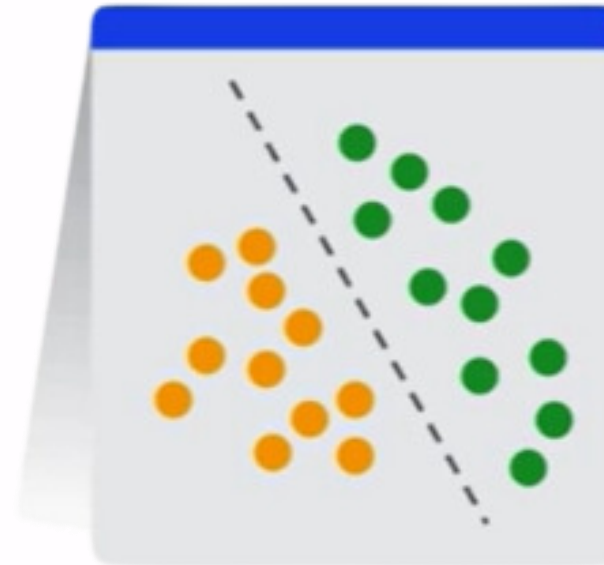


Co-funded by the
Erasmus+ Programme
of the European Union

Large Language
Models (LLMs)
are also a **subset**
of Deep Learning



Deep Learning Model Types



Discriminative

- Used to classify or predict
- Typically trained on a dataset of labeled data
- Learns the relationship between the features of the data points and the labels



Generative

- Generates new data that is similar to data it was trained on
- Understands distribution of data and how likely a given example is
- Predict next word in a sequence

Applications, Tools and Perspectives of AI in Education for Secondary School Teachers



HELLENIC MINISTRY OF
Education, Religious Affairs and Sports



Co-funded by the
Erasmus+ Programme
of the European Union

Discriminative
technique



Classify
→

Discriminative model
(classify as a dog or a cat)



Generative
technique



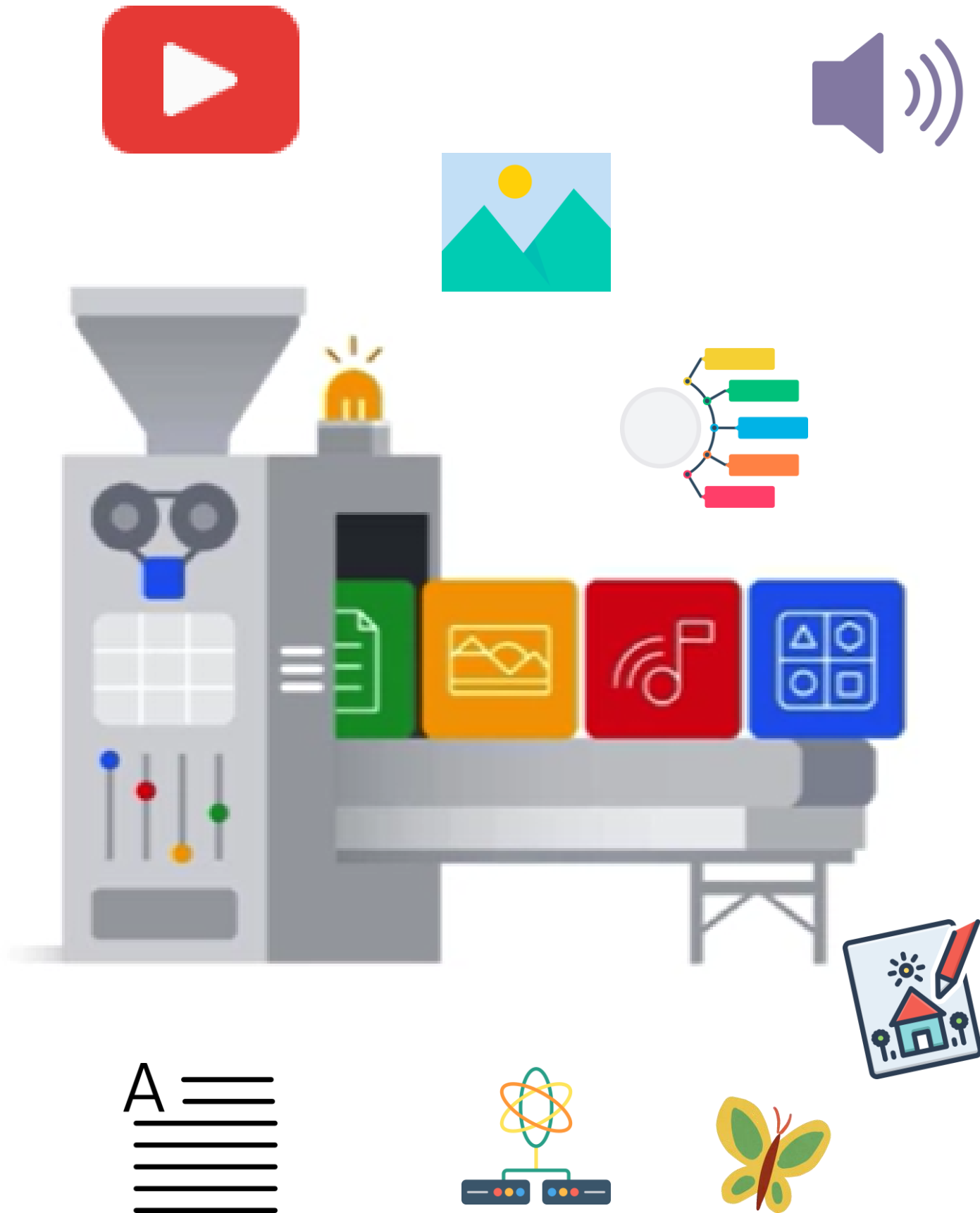
Generate
→

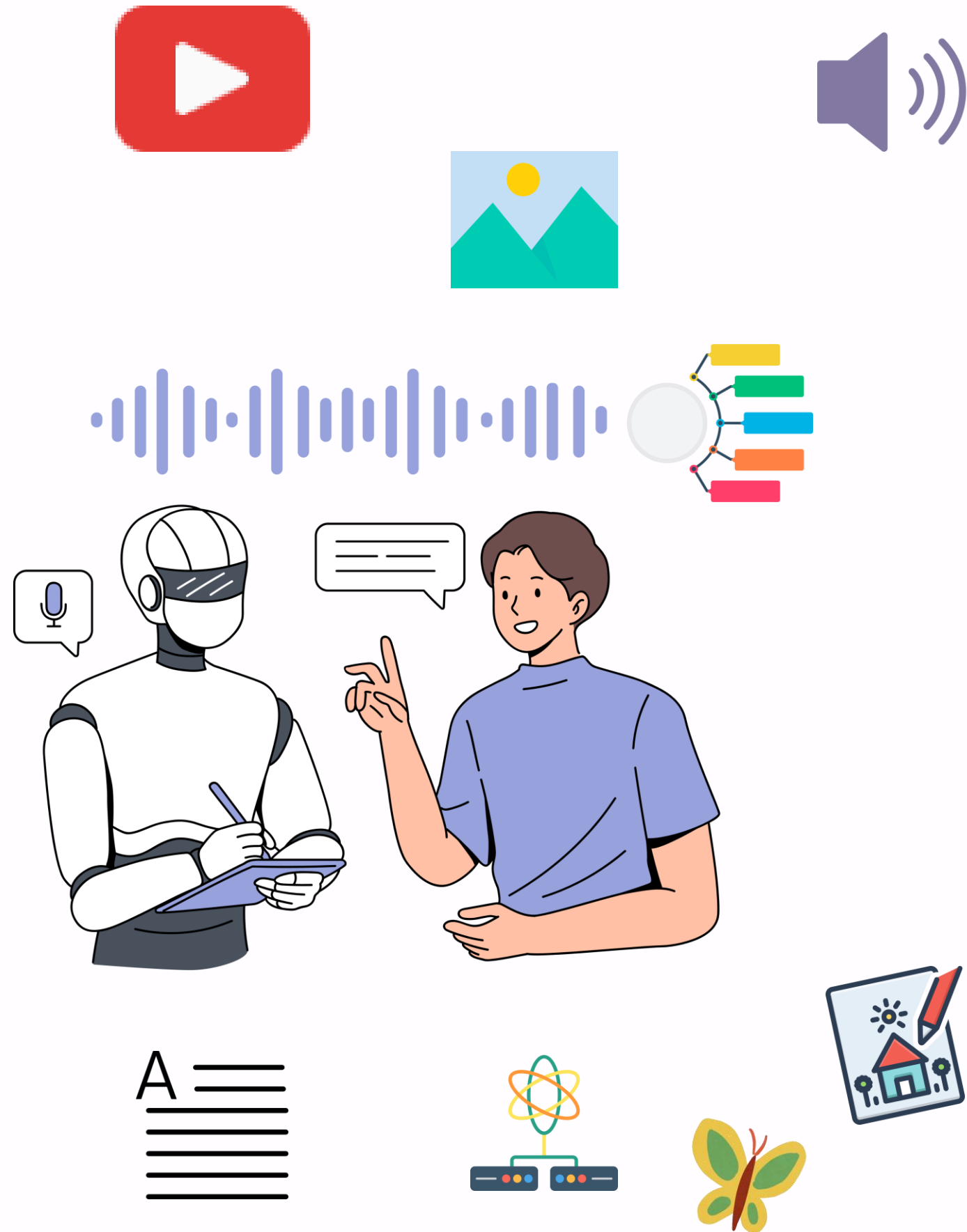
Generative model
(generate dog image)



Generative AI is a type of artificial intelligence technology that

- **can produce various types of content- including text, imagery, audio and synthetic data.**
- **can create new content based on what it has learned from existing content.**



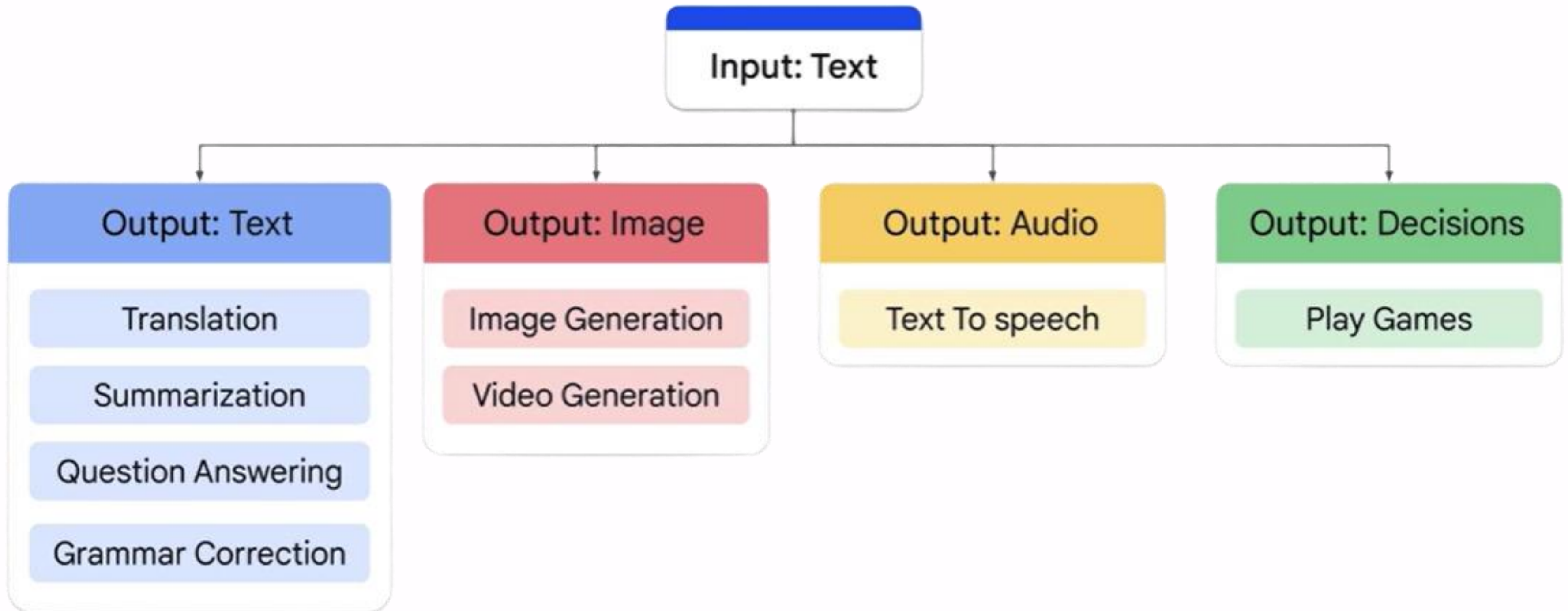


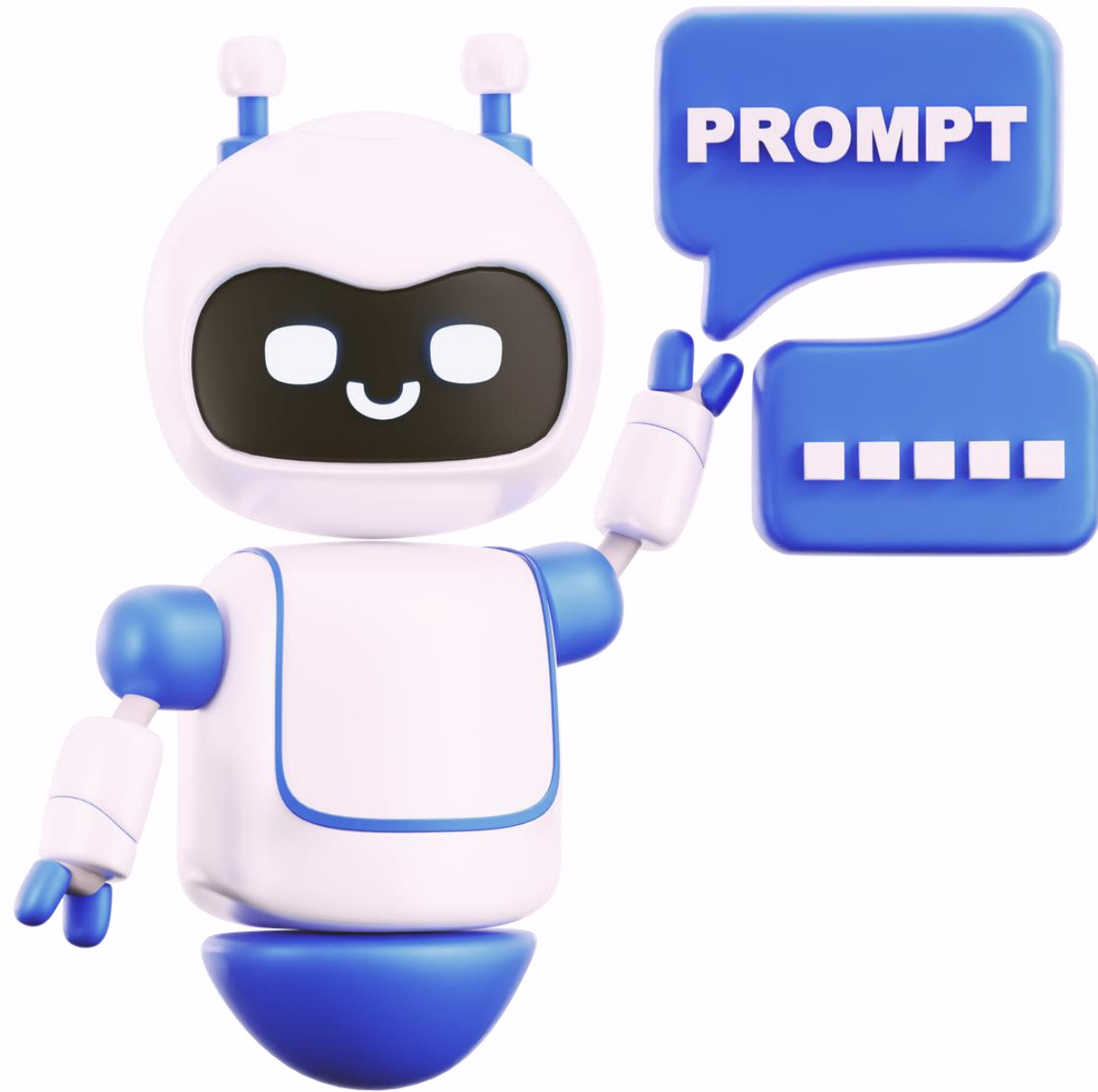
The Generative AI process
Labeled + Unlabeled
data
“foundation model”

The foundation model can then generate new content. It can generate **text, code, images, audio.**

That’s why it is called **Generative!**

Types of Generative AI Based on Data





A prompt, in the context of language models , refers to the initial text or instruction that a user provides to obtain a desired response or continuation.

For example, if you were to ask AI, "What is the capital of France?" The prompt would be the question itself. Based on AI generates a response such as "The capital of France is Paris."

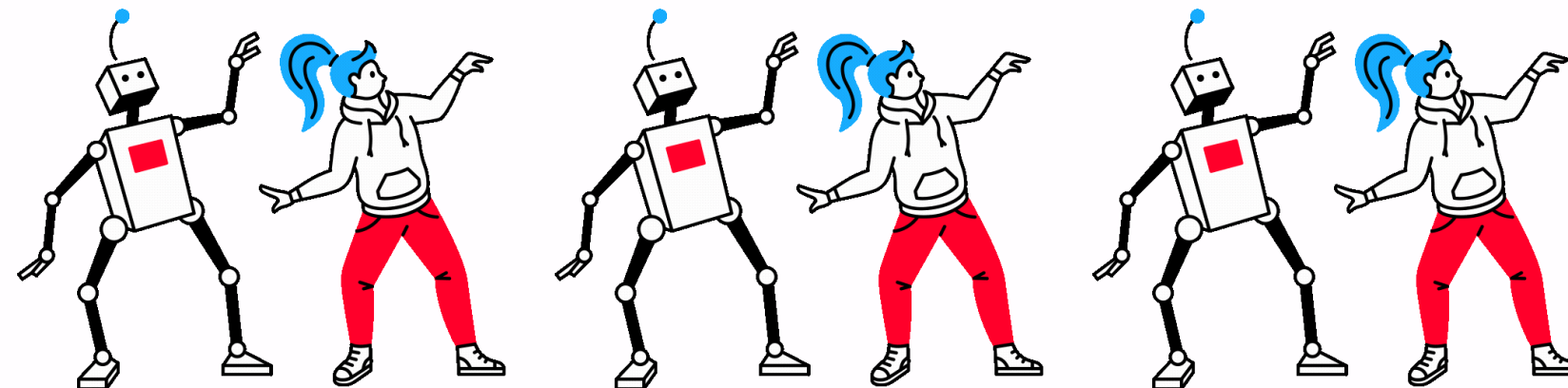
Say What You See

The Power of eTwinning



<https://experiments.withgoogle.com/say-what-you-see>

ca HOW
GenAI tool
be used i
projects? eTwinning
h S



Searching for Information



Gemini



[Perplexity.Ai](#)

[Teach Anything](#)

[ChatGPT](#)

★ **Gemini** - <https://gemini.google.com/app>

★ **Hugging Face** - <https://huggingface.co/>

[Copy.ai](#)

CoPilot



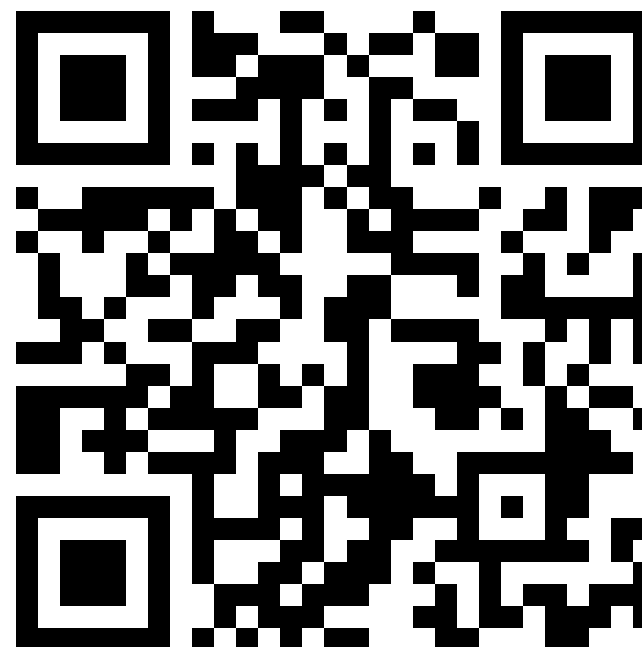
Creating Project Ideas

AI Writer : <https://tools.picsart.com/text/ai-writer/idea-generator/>

Idea Generator : <https://www.ideagenerator.ai/>

Neuraltext: <https://neuraltext.com/ai/content-ideas-generator>

★ **Talknotes:** <https://talknotes.io/tools/idea-generator>



Creating Project Titles



★ **Good Content:** <https://tr.semrush.com/goodcontent/title-generator/>

Appy Pie: <https://www.appypie.com/ai/title-generator/project-title-generator>

Ahrefs: <https://ahrefs.com/writing-tools/seo-title-generator>

Capitalize My Title: <https://capitalizemytitle.com/ai-title-generator/>



Creating Project Plan



★ **LogicBalls:** <https://logicballs.com/tools/project-plan-generator>

Copy.AI: <https://www.copy.ai/>

★ **FlexOS:** <https://www.flexos.work/tools/ai-action-plan-generator>

Easy-peasy.AI: <https://easy-peasy.ai/templates/project-timeline-generator>

Creating Project Logo



Renderforest: <https://www.renderforest.com/logo-maker#All>

Hatchful: <https://www.shopify.com/tools/logo-maker/onboarding/pick-space>

★ Free Logo Generator: <https://freelogogenerator.com/>



Creating Project Video



Invideo.AI: <https://ai.invideo.io/login>

Lumen5: <https://lumen5.com/>

WaveVideo

Steve.ai

Slidemagic

Hotshot

Tome



Creating project themed photos

[DALL·E 3](#)

[Midjourney](#)

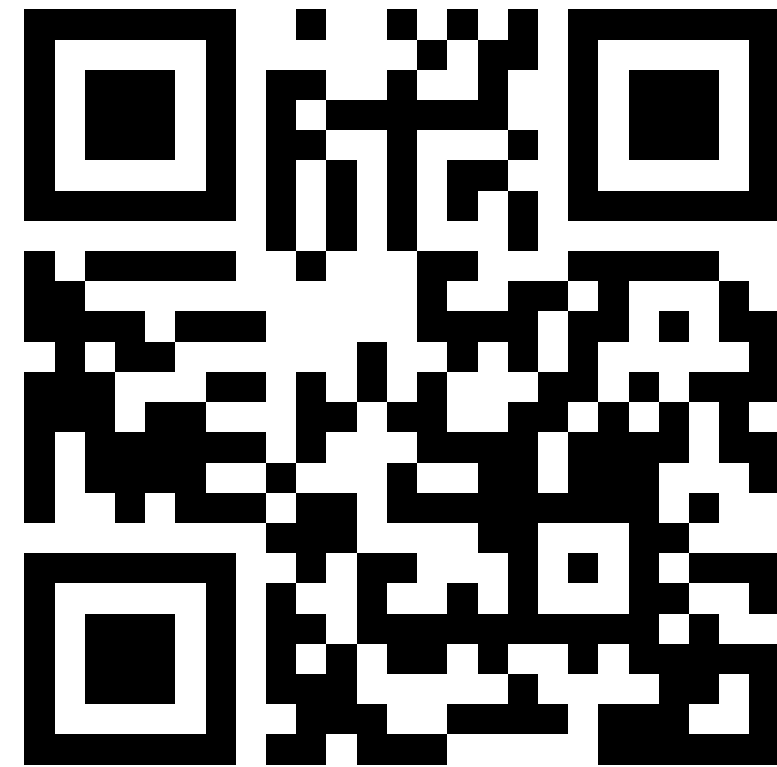
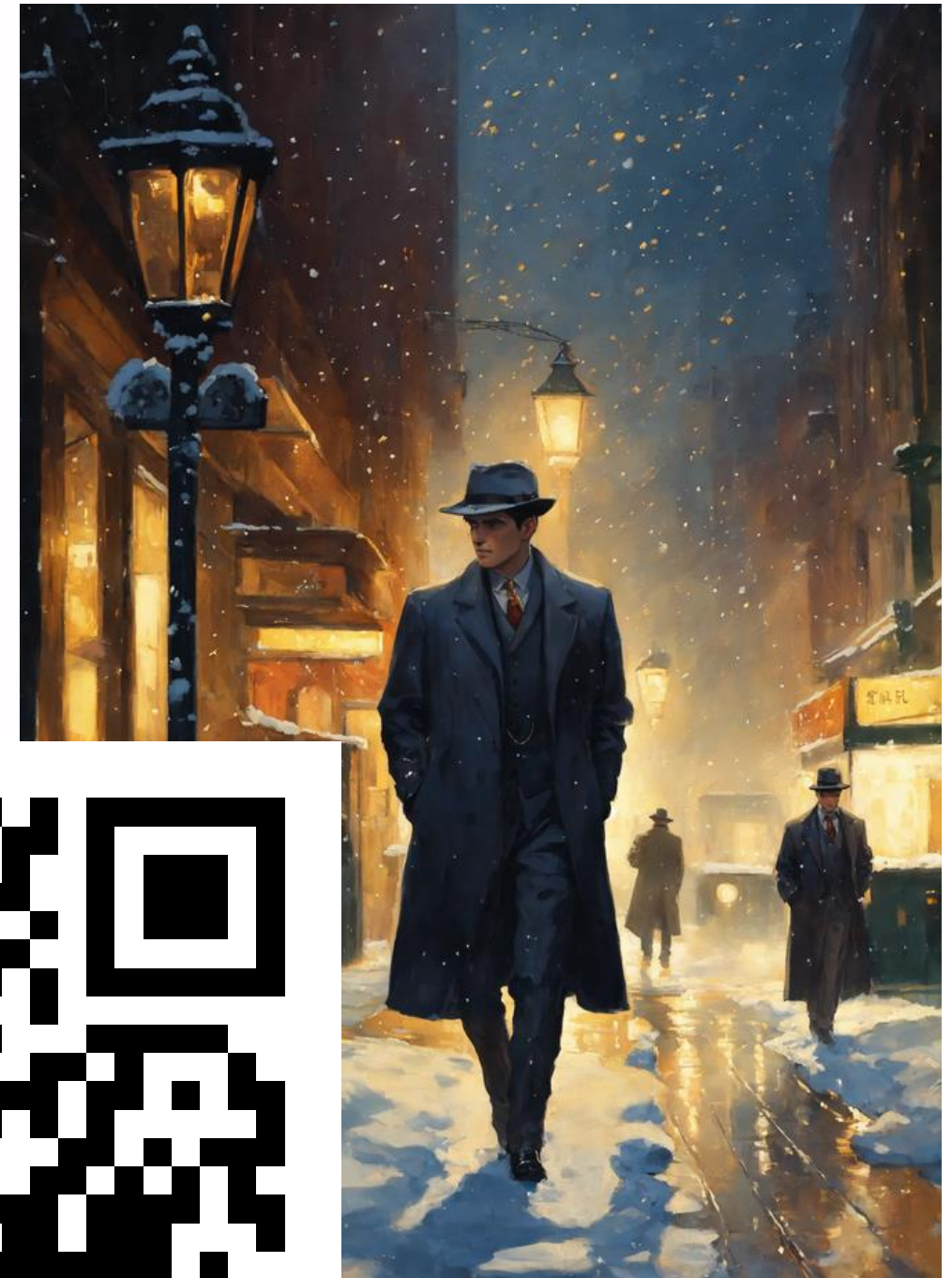
[DreamStudio \(Stable Diffusion\)](#)

[Firefly \(Photoshop\)](#)

★ **Leonardo.ai** - <https://app.leonardo.ai/>

Lexica.art - <https://lexica.art/login>

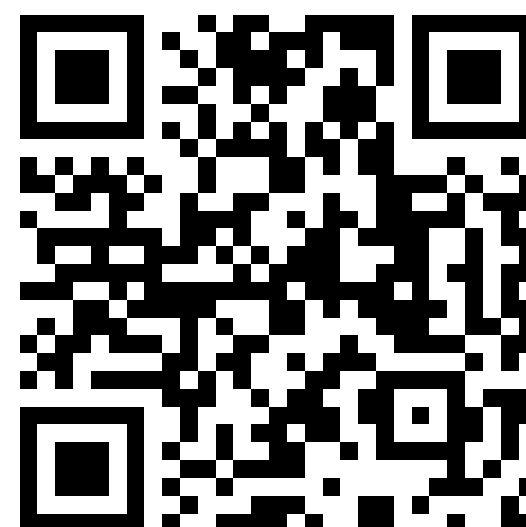
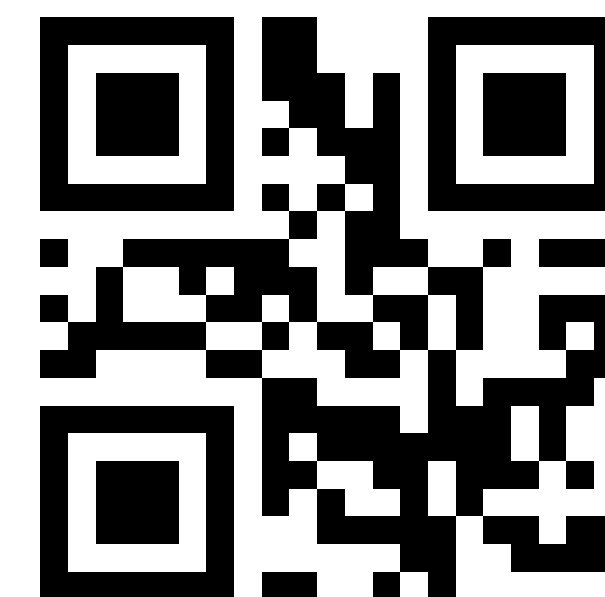
[DaLL-E](#)



AI Collaboration Tools



- ★ Canva - <https://www.canva.com/>
- ★ Adobe Creative Cloud - bit.ly/3Wt25bu
- ★ Genially - <https://auth.genial.ly/login>



AI Fun

- ★ **Suno** - Song - <https://suno.com/>
- Profile Pic Maker - <https://app.pfpmaker.com/>
- ★ **Questgen** - <https://www.questgen.ai/ai-mcq-generator>
- MagicChart**
<https://www.magicslides.app/tools/magicchart>



All in One Tools/ Education



- ★ MagicSchool - A lot of practical tools for educators - <https://www.magicschool.ai/>
- Eduaid - practical Edu tools - <https://eduaiapp.com/>
- Twee - Lesson and Activity plans - <https://twee.com/links/>
- ★ Almanack - Presentations - <https://www.almanack.ai/>
- ★ Quizalize - Quizzes and Games
<https://www.quizalize.com/>
Powered by ChatGBT



Applications, Tools and Perspectives of AI in Education for Secondary School Teachers



HELLENIC MINISTRY OF
Education, Religious Affairs and Sports



"Integrating generative AI pedagogically can transform classrooms into dynamic learning environments where AI tools actively contribute to curriculum development, student assessment, and personalized learning pathways."



Contact Seminar

Applications, Tools and Perspectives of AI in Education for Secondary School Teachers



HELLENIC MINISTRY OF
Education, Religious Affairs and Sports



**AI Integrated
Links**

- bit.ly/LessonPlaneTw1
- bit.ly/LessonPlaneTW22
- bit.ly/LessonPlaneTw3
- bit.ly/LessonPlanetw4



Contact Seminar

Applications, Tools and Perspectives of AI in Education for Secondary School Teachers



HELLENIC MINISTRY OF
Education, Religious Affairs and Sports



Contact Seminar

Applications, Tools and Perspectives of AI in Education for Secondary School Teachers



HELLENIC MINISTRY OF
Education, Religious Affairs and Sports



Co-funded by the
Erasmus+ Programme
of the European Union

thank
you

**eTwinning is an Agent of Change at
Schools!**

adiltugyan@hotmail.com

m

ertan.meb@gmail.com

m



Contact Seminar